



Belmore

PRIMARY ACADEMY

Year 6 – Information Meeting

KIND

RESILIENT

READY

ACTIVE

ASPIRE

Introductions – Who's who?



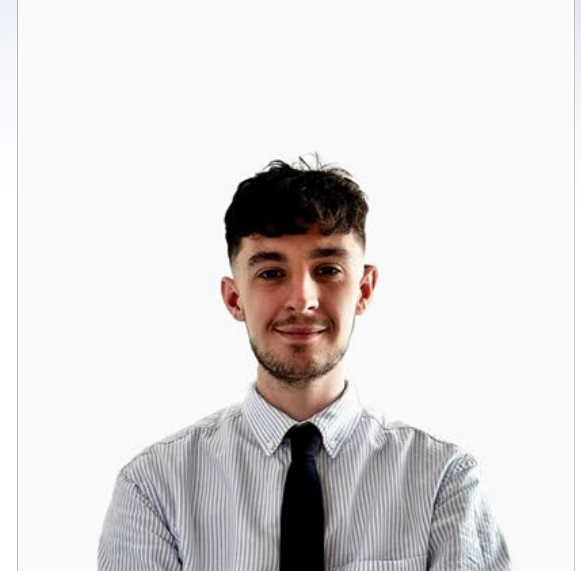
Mr Maudsley (6M)

Year Group Leader



Mr Leitch (6L)

Class Teacher



Mr Reay (6R)

Class Teacher

Belmore Senior Leadership Team



Rose Taunt – Head Teacher

Emma Cook – Assistant Head, Designated Safeguarding Lead

Adrian Cotter – Assistant Head, SENDCO

Swata Patel – Assistant Head Years 1-3

Gemma Bellfield – Assistant Head Years 4-6

Katriona Rae – Assistant Head

Chris Chamberlain – Associate Assistant Head

Rebecca Earley – Associate Assistant Head, Deputy SENDCO

Other useful people:

- Mrs Marsh – Welfare Officer for any thing medical
- Mrs Hopkins – Family Worker
- Mrs Payne – Attendance and Admissions
- Ms Marquis – Pastoral
- Mr Marquis - Pastoral

Our Values



These are the values that guide everything we do as a school.

SM

KIND

RESILIENT

READY

ACTIVE

ASPIRE

Behaviour expectations

OUR VALUED BEHAVIOURS

We are proud to be part of the Belmore community where we have high expectations to represent the school positively.

We have a positive mind-set and even when we are faced with challenges we:

Recognise that everyone is different and we value and encourage them



Use kind words and actions. No swearing, racist, abusive or inappropriate language. No hurting others, fighting or play fighting



Are polite and use good manners



Listen and follow school adults instructions wherever we are



Make sure we are where we are supposed to be, ready to learn



Move around school calmly and safely



Look after our school, classrooms and playgrounds, and everything in them



Speak up when something isn't right



We are honest, take responsibility for our actions and choices and understand that they have consequences



We have high expectations for behaviour.

All children have the right to come and learn with out others disrupting lessons.

We will not tolerate bullying or racism at our school

Children need to be making the right choices now to secure the best outcomes for the future.

BL

Belmore Valued Behaviours

Motivators

- Positive praise and recognition
- Dojo points with a 100 point prize at the end of every term
- Positions of responsibility
- Reward time – Thursday PM
- End of SATs Treat - Bowling

Consequences

- Support and reminders to do the right thing
- Yellow Card
- Red Card, move to partner class
- Support from Pastoral Team
- SLT support
- Head Teacher
- Internal and external suspensions

We will always support children to reflect on their behaviour and help them with strategies to improve it next time

SR

Timings of the day

- Start of Day: 8.35 - 8.50am
- End of Day: 3.20pm

- Please make sure your child comes to school on time

Topics, Trips and Visits

SM

	Topic	Trips and Visits
Autumn 1	Map Skills	Thorpe Park
Autumn 2	Early Islam	Gurdwara Author Talk x2 Barnhill Cooking Young Shakespeare Company - Macbeth
Spring 1	Polar Regions	
Spring 2	WW2	Battle of Britain Bunker
Summer 1	Globalisation	Bowling
Summer 2	Maafa	Residential Barnhill DT

- Tuesday and Thursday – PE Days
- Children can wear their PE kit to school on these days.



SR

By the end of the year

Comprehension

- **Themes:** Spot and talk about common ideas in different types of stories and texts.
- **Vocabulary:** Figure out what words mean from how they're used and talk about why they matter.
- **Inference:** Use clues from the text to understand characters, places, and events.
- **Prediction:** Guess what might happen next using what you've read so far.
- **Summarising:** Pick out the main ideas from a few paragraphs and the key details that support them.
- **Language & Style:** Talk about how the author's words and writing style affect the story.
- **Comparisons:** Compare characters, settings, and ideas across different texts.
- **Critical Thinking:** Tell the difference between facts and opinions, and think about what the author is trying to say.

Reading for Pleasure

- Read lots of different books for fun – stories, poems, plays, and facts.
- Suggest books to friends and explain why you liked them.
- Talk about your favourite books and give reasons using examples from the text.

By the End of Year 6

You should be able to:

- Read confidently and smoothly across many types of texts.
- Understand what you read – picking out key ideas, making guesses, and comparing things.
- Think deeply about books and explain your thoughts clearly with evidence.

SM

By the end of the year

Writing:

- **Write for different purposes** – stories, reports, letters, explanations, persuasive pieces.
- **Choose words carefully** to suit the audience (e.g. formal in a letter, descriptive in a story).
- **Organise ideas clearly** using paragraphs, headings and linking words.
- **Use grammar well** – varied sentences, correct tense, clauses, and conjunctions.
- **Use punctuation accurately** – including commas, apostrophes, speech marks, colons and semi-colons.
- **Spell most words correctly**, especially tricky Year 5/6 words.
- **Handwriting** – joined, fluent and easy to read.

By the end of the year

By the end of Year 6, children should be able to:

- **Number & Place Value**
 - Work confidently with numbers up to **10 million**.
 - Understand negative numbers and use them in context.
- **Calculations**
 - Add, subtract, multiply and divide large numbers confidently.
 - Use formal written methods (long multiplication/division).
 - Know times tables facts up to 12×12 and use them in problem solving.
- **Fractions, Decimals & Percentages**
 - Simplify, compare and calculate with fractions.
 - Convert between fractions, decimals and percentages.
 - Solve problems involving ratios and proportion.
- **Algebra**
 - Use simple formulae, find unknown values, and spot number patterns.
- **Measurement**
 - Convert between units (e.g. $\text{km} \leftrightarrow \text{m}$, $\text{cm} \leftrightarrow \text{mm}$, $\text{hours} \leftrightarrow \text{minutes}$).
 - Calculate area, perimeter and volume.
- **Geometry**
 - Recognise, describe and build 2D/3D shapes.
 - Use knowledge of angles (e.g. a triangle = 180°) to find missing angles.
 - Read and plot coordinates in all four quadrants.
- **Statistics**
 - Interpret and draw line graphs and pie charts.
 - Calculate and interpret mean averages.

BL

Whole school Notices & Letters

Weekly Newsletter	emailed every Friday
Class/Year Group Letters	emailed as needed and put on class Dojo
Whole school reminders – e.g. non-uniform day	Text and Class Dojo
Class and Year Group Reminders	Class Dojo
Attendance information	You will be emailed information about your child's attendance in the last week of every half term

Communicating with school

- As a school, we prefer, where possible to speak to you face to face.
- We may also phone, text or email you or contact you through Class Dojo

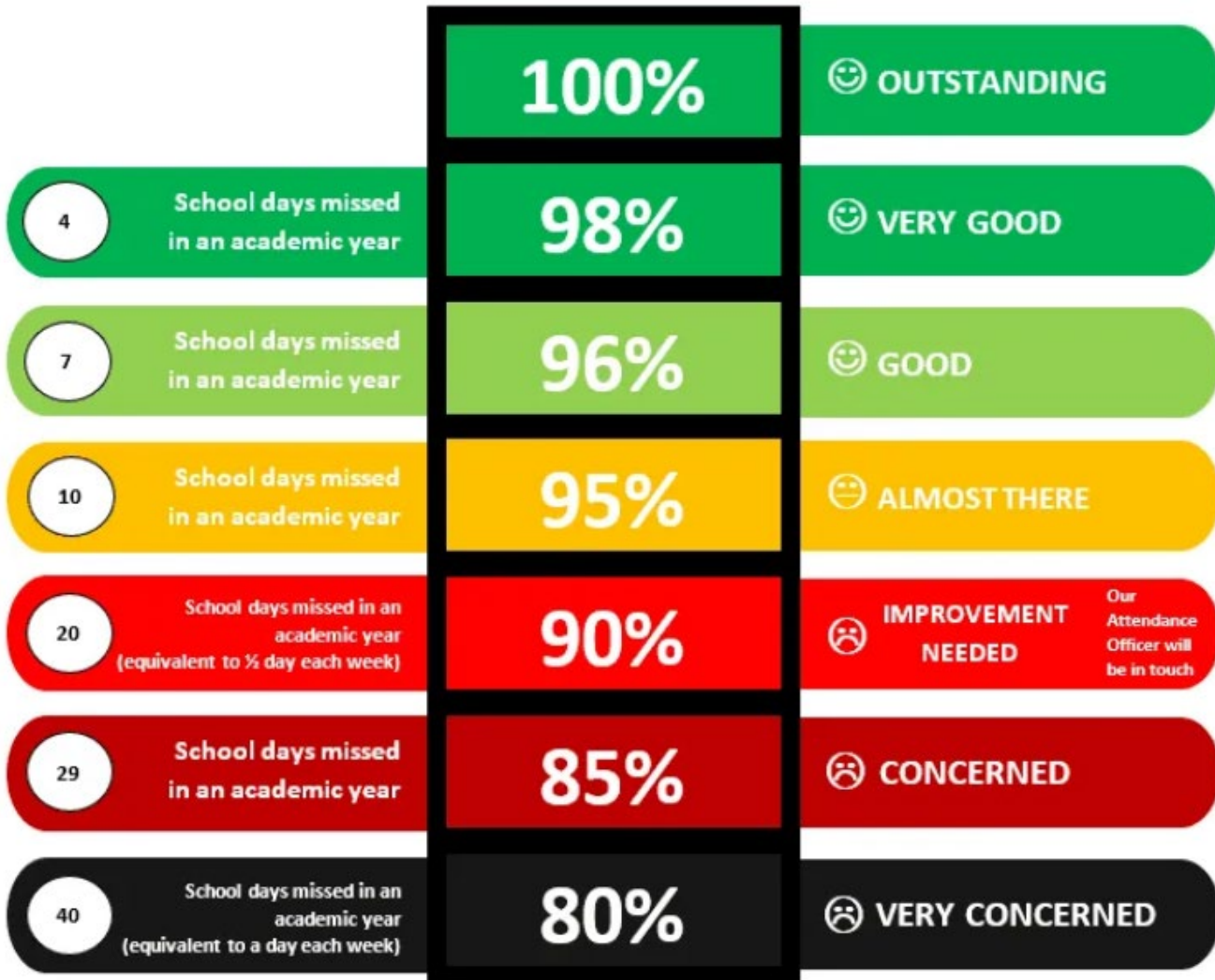
	How we'll be in touch
Communication with class teacher -	<ol style="list-style-type: none">1. In person at the end of the day2. On Class Dojo after school hours3. Telephone call after school hours
Communication with Year Group Lead or SLT	<ol style="list-style-type: none">1. In person at the end of the day2. Telephone call after school hours
Communication with admin staff (front office, attendance, admissions, finance etc.)	<ol style="list-style-type: none">1. In person at the front office2. By telephone3. By email

SM

Please make an appointment if you need to meet with a member of staff. We are unlikely to be able to meet you immediately if requested as staff are teaching or have planned meetings.

Our staff are here to do their very best for your children. Please treat all staff with respect.

Attendance Matters



25% more likely to be at the expected standard at the end of Y6*

SR

When to keep your child off school

1. If your child has a temperature of over 38 degrees keep them off until it returns to normal
2. Vomiting or diarrhoea – please keep them off for 48 hours after the last time they were ill
3. Contagious illnesses: Chicken Pox, Diphtheria, Hepatitis A, Impetigo, Measles, Mpox, Mumps, Rubella (German Measles), Scarlet fever, TB, Whooping cough. Please check government guidelines - [Children and young people settings: tools and resources - GOV.UK](#)

Please send them to school if they are under the weather, we will always call you if they need to go home.

SR

Other absence

- All holidays during term time will be unauthorised including trips to visit family
- School can only authorise absence in exceptional circumstances
- Taking unauthorised absence may result in you being fined by Hillingdon Council. An attendance penalty notice is £160 per parent per child.

SM

When your child is off school

- They miss
 - Important lessons which aren't repeated, especially in reading, phonics, writing and maths
 - Developing friendships. Children who are frequently absent find it harder to make friends
 - Maintain concentration and focus
 - We want your child in school!

Attendance Incentives KS2

- Weekly Trophy
 - The class with the highest attendance the previous week is awarded the attendance trophy
 - The whole class gets attendance stickers
- 95% club
 - All children with 95% attendance that term so far are entered into a prize draw of toy shop prizes
- Whole Class 100% Attendance
 - Any class with 100% attendance the previous week gets a non uniform day on the Monday

BL

What happens when your child misses school

Day 1

- Text sent if you haven't already contacted the office

Day 2

- Ms Payne will phone you as to when your child may be better enough to return
- Class teacher will send a Dojo Message

Day 3

- Class teacher will phone

Day 4

- You may receive a home visit from the attendance team to see if there's anything we can do to help.

SM

*If contact can't be made, a home visit will be made on day 3

What to wear

Uniform

- Blue sweat shirts or cardigans with the Belmore logo
- Grey or black trousers or skirts
- White shirts, blouses or collared T shirts
- Plain blue, black or white hijab
- Trainers, shoes or boots. No Ugg style boots, sandals, sliders or crocs

PE Kit

- Black shorts or black footless leggings and white T shirts (long or short sleeved)
- Black plimsolls or trainers in KS2 (these must be different from day time shoes)

SM

Homework

- Given out every Wednesday.
- Homework due back on the following Tuesday.
- It will include a variety of tasks based on SPAG, Arithmetic, Reasoning and Reading.

SR

Reading

Reading is the foundation for all other learning. Daily reading aloud builds vocabulary, expands background knowledge and supports learning across all subjects. Reading aloud strengthens fluency, prosody and comprehension, making it a vital part of the daily home routine.

All children will bring home either a Little Wandle book linked to their phonics stage or a 'free reading' book. These books should be read aloud to an adult each night.

Children with a Little Wandle decodable book will also bring home a book to share. This book is to be read together and enjoyed with your child, it does not matter if the child cannot access it independently.

Free reading books are sent home for children to read as soon as their journey with fully decodable books has finished as research shows that continuous book banding destroys a love of reading.

Reading should be logged on the Boom Reader app – this can be logged on either the parent app or the child app. Logging daily reading allows teachers to see progress, track book choices and note the wider progress that is being made due to frequent home reading.

Boom Reader logins will be shared with you via teachers.

BL

We test children every term to check their progress and see the main areas we need to teach the following term.

We help children build up their resilience so they don't find these tests overwhelming or stressful.

We don't share the test scores but they inform whether your child is on track to meet age related expectations.

SR

Statutory Assessment

Monday 11th May – Thursday 14th May 2026

Y6 SATs Week – if possible, avoid doing past papers as these are what we use to test.

BL

Online Safety

- Children should have their screen time closely monitored at home
- They should not be spending more than 1 hour a day on screens
- Children under 12 should not be using whatsapp, facebook, Instagram, snapchat, tiktok etc.
- Look on the newsletter for our weekly online safety tips and guidance



- **OPAL** is based on the idea that, as well as learning through good teaching, children also learn when they play.
- Benefits of regular, quality outdoor play:
 - - **Physical:** Enhances physical fitness, coordination, and strength.
 - - **Emotional:** Reduces stress, improves mood, and boosts self-esteem.
 - - **Social:** Encourages teamwork, communication, and social skills.
 - - **Cognitive:** Stimulates creativity, problem-solving, and critical thinking.

BL

Belmore Adventurers

- After-school club runs every day from 3.20-6pm
- Includes snacks and dinner
- Run by Miss Paisley and Mr Lane
- More information and bookings - [Belmore Primary School - NEW! Belmore Adventurers](#)
- Bookings close at 12.00 on the day

Applying for Secondary School



The deadline for on-time applications is Friday 31 October 2025.

National offer day is Monday 2 March 2026.

[Starting secondary school September 2026 - Hillingdon Council](#)

SM

Applying for Secondary School

Date	School(s)
Tuesday 9 September	Bishopshalt School
Wednesday 10 September	Park Academy West London
Thursday 11 September	Swakeleys School, Barnhill Community High School
Tuesday 16 September	Rosedale College, Harefield Academy
Wednesday 17 September	Oak Wood School, Queensmead School
Thursday 18 September	The Douay Martyrs School, Haydon School
Monday 22 September	Uxbridge High School
Tuesday 23 September	Harlington School
Wednesday 24 September	Vyners School
Thursday 25 September	Ruislip High School, Hewens College
Tuesday 30 September	Guru Nanak Sikh Academy
Wednesday 1 October	Northwood School
Thursday 2 October	Bishop Ramsey CE School

SM

Questions

Thank you for giving up your time to come to the meeting
and for your continued support

SM

KIND

RESILIENT

READY

ACTIVE

ASPIRE