

WEEKLY

# NEWSLETTER

Friday 21st November 2025



KIND

RESILIENT

READY

ACTIVE

ASPIRE

## Message from Miss Taunt

Dear Families,

As winter germs circulate, please remember it is absolutely fine to send your child to school with a cough or cold, as long as they do not have a temperature. Attendance has been low across the school this week, and it's important that children continue learning - even if they're not feeling 100%. We will always contact you if we feel they need to go home.

We're looking forward to seeing you at Parents' Evening next week! Alongside your meeting with your child's teacher, you'll have the opportunity to:

- Speak with the Senior Leadership Team (SLT)
- View our latest art exhibition
- Purchase books, including SATs practice materials
- Meet our tuition partners, Learning Labs
- Connect with members of our pastoral team

Please make sure you've booked a slot on Dojo, and remember that school will close at **1:00 pm** on that day.

Following our recent two-week half-term trial, we are seeking your views. Please take a few minutes to complete the survey. We are also gathering feedback from staff and reviewing attendance and assessment data before making decisions about next year's holiday schedule.

Have a wonderful weekend!  
**Rose Taunt, Head Teacher**

Attendance Ladder



## Dates for the week

### Monday 24th November

Year 2 Guy Fawkes Workshop

### Tuesday

Parent/Carer Coffee Morning 8.50-10am

### Wednesday

Reception Gruffalo Experience Morning

1pm School closed

1.30-6.30 - Parents Evening. Please make sure you have booked your slot on Dojo

### Thursday

9-11am Stay and Play for 0-4 year olds

Y6 Gurdwara Visit

Football Tournament—selected pupils

5pm—Open Evening for prospective Reception Parents

### Friday

9am Years 1 and 2 Celebration Assembly. Families welcome to join.

9.45 - School tours, no booking required. New and current families welcome

2.45pm Years 3 to 6 Celebration Assembly. Families welcome to join.

Belmore Primary School - 2 Week  
Half Term Break Survey



CLICK HERE

# Dates for your Diary

*We want you to be part of our school*

*We will be ACTIVE  
in mind and body*

## Autumn Term 2025

New things that have been added this week will be highlighted yellow.



### Key Dates for the Autumn Term

Created by scott desmond  
from Noun Project

<b>November</b>	Monday 24th November	Year 2 Guy Fawkes Workshop
	Wednesday 26th November	Reception Gruffalo Experience Morning
	Wednesday 26th November	1.00pm Early Finish including Nursery 1.30-6.30pm Parents Evening Slots will be booked on Dojo, more information to follow after half term
	Thursday 27th November	Y6 Gurdwara Visit
	Thursday 27th November	Football Tournament—selected pupils
	Thursday 27th November	5pm Open Evening for new Reception children—September 2026
<b>December</b>	Monday 1st December	Yr 4 Cooking Sessions
	Tuesday 2nd December	Yr 5 Cooking Sessions
	Wednesday 3rd December	Yr 6 Cooking Sessions
	Wednesday 3rd December	Years 4, 5 and 6 Cooking Workshops
	Thursday 4th December	PTA Christmas Disco
	Monday 8th December	Reception Vision and Hearing Checks
	Wednesday 10th December	9.30am and 2pm Nursery and Reception Christmas Sing-a-long Show
	Friday 12th December	Christmas Jumper Day and Christmas Dinner
	Tuesday 16th December	9.30am and 2.15pm Year 1 and 2 Christmas Show
	Wednesday 17th December	PTA Christmas Raffle
	Thursday 18th December	Year 6 Visiting Theatre - Macbeth
	Friday 19th December	1.30pm Finish No Nursery all day

### 2026 Dates

3rd February - Year 4 & Choir Young Voices Experience

Wednesday 11th March 2026 - Spring Term Parents' Evening. 1pm school closure; Meetings: 1.30-6.30pm

Week beginning 11th May - KS2 SATs

Tuesday 7th July 2026—Open Evening, 4-6pm

# ATTENDANCE

*Attend today, Achieve tomorrow  
Every day counts!*

*We will be ACTIVE  
in mind and body*

If your child is unable to attend school for any reason it is important that you phone the school **before 8am** on the first day of absence and leave a message on the absence line **by calling 01895 462364 and choose option 1.**

**2K Non-Uniform Day this Monday!!**



## Attendance WC 17/11/25

Class	Attendance
NAM	90.0
NPM	77.5
ALL DAY	69.1
EINSTEIN & WARHOL	91.0
RCW	92.3
RW	93.8
RR	88.0
1Q	97.3
1O	93.3
2D	94.2
2R	93.8
2K	100.0
3H	94.8
3F	95.0
3A	89.1
4CH	92.3
4CL	90.0
4Q	93.5
5L	96.4
5F	92.6
5E	95.0
6L	96.5
6M	96.2
6R	93.5

## Top Attendance Classes

The classes claiming the Attendance Cup for the best attendance this year are:

**Lower school - 2K**  
**Key Stage 2 - 6L**



**This week's whole  
school attendance**

**↓ 92.8%**

**Our target is more than 95%**

**Number of children who had 100%  
attendance this Week:**

**↓ 367**

# CELEBRATIONS & AWARDS

*We ASPIRE to be  
the best we can be*

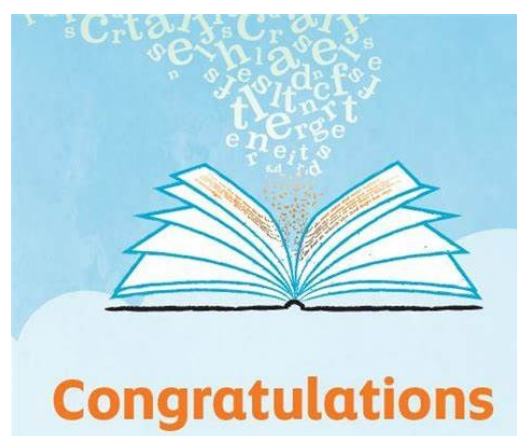
## Our super stars of the week are:

Class name	Star Pupil
Warhol	Kuhith
Einstein	Hassan
RCW	
RW	
RR	Louie
1O	Scarlett
1Q	Maiza
2D	Rosie
2R	Theo
2K	Usman
3H	Reeha
3F	Jassor
3A	Neyen
4CH	To be awarded on Monday
4CL	
4Q	
5L	Connor
5F	Mia
5E	Leena
6M	Anaya
6L	Keisha
6R	

## PSD Sports Champions

Mali	Adam	Lukas
Lilly-Mae	Rudraksh	Francis
Natalia	Zaviar	Leena
Safa	Mustafa	Denzel
Meena	Leo	Umar

## Our Readers of the week are:



Izabel	Anaya
Ibrahima	Robin
Gio & Mason	Matei
Keisi	Ramiyan
Robert	Sienna
Faith	Mohamed-said
Alma	
Zakariya	
Kory	
Aaranya	





# PARENT INFO

*We will be ACTIVE  
in mind and body*

**THE PSD ACADEMY**

# FOOTBALL DEVELOPMENT CENTRE



FOR THOSE LOOKING TO TAKE  
THEIR GAME TO THE NEXT LEVEL,  
THESE SESSIONS SUPPORT  
PLAYERS TO PROGRESS AND  
ACHIEVE THEIR GOALS.

**MONDAY NIGHTS**

- 5PM - 6PM: UNDER 5'S - UNDER 8'S  
(RECEPTION, YEAR 1, YEAR 2 & YEAR 3)
- 6PM - 7PM: UNDER 9'S - UNDER 13'S  
(YEAR 4, YEAR 5, YEAR 6, YEAR 7 & YEAR 8)
- 6PM - 7PM: GIRLS DEVELOPMENT CENTRE

**ASTRO PITCHES @ HILLINGDON LEISURE CENTRE** ☎ 0203 397 7409  
GATTING WAY, UB8 1ES  
✉ academy@thepsdgroup.org.uk  
£10.50 PER SESSION

SCAN TO BOOK



**BOOK NOW:**  
[WWW.THEPSDGROUP.ORG.UK/ACADEMY](http://WWW.THEPSDGROUP.ORG.UK/ACADEMY)

CLICK HERE

## PARENTS AND CARERS WORKSHOP

Join local officers and partner services for an information evening. Learn how to spot the early signs of child criminal exploitation and grooming and the support available.

DATE  
Weds 3rd  
December

7.00pm - 8.30pm

PLACE  
Online - register via QR  
code below to book your  
spot!

TIPS

SUPPORT

GUIDANCE

ADVICE

[www.met.police.uk](http://www.met.police.uk)



BELMORE PTA

## Bring a gift Christmas Non-Uniform Day



Thursday 4<sup>th</sup> December

Donate a Christmas gift for the raffle  
or pay £1 on Parent Pay!

**MERRY & BRIGHT**

JOIN US FOR A

# CHRISTMAS DISCO

GAMES . FUN . DANCE

**4TH DECEMBER**

Nursery & Reception from 2 - 3pm £3 Donation  
Year 1, 2 and 3 from 3.20 - 4:45pm  
Year 4, 5 and 6 from 5.15 - 6.45pm  
**TICKETS £7**  
Tickets are limited - now available on ParentPay

*Drop off and collection from main  
playground.  
PSD clubs will be running as usual  
and will be charged.*

BELMORE PTA



**We are lucky enough to have had a sandpit made over half term. The sandpit will soon be ready to use.**

**Please help us make it a fun place to play by donating any sand play toys—used or new.**



**Please bring in named wellington boots to keep at school. This will mean that your child can play outside whatever the weather.**

**Please ensure you send your child into school in an appropriate waterproof coat if it might rain. This will ensure their uniform stays dry whilst they enjoy their outdoor play.**

# KEEPING SAFE ONLINE

We are **RESILIENT** and  
learn from our mistakes

We are getting more and more children who are using online games and social media inappropriately. Make sure you have the right information to keep your child safe online.



internet  
matters.org

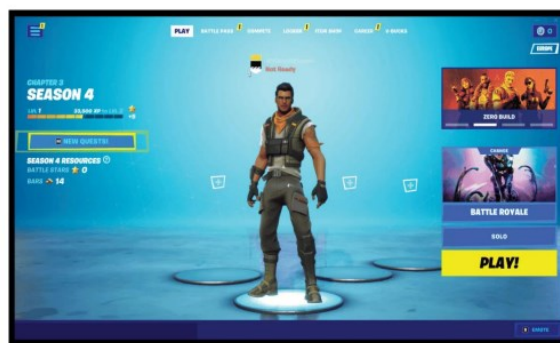
CLICK HERE

## 1 How to set up parental controls

Fortnite Battle Royale is rated PEGI 12 because of its elements of violence. However, children under this age might play the game as well. Epic Games has implemented parental controls in-game that work with the Epic Games Store controls.

To set up parental controls:

**Step 1** – From the **main menu**, select the **menu in the top corner** (3 lines) then select the **gear icon**.



CLICK HERE

CLICK HERE



childline

ONLINE, ON THE PHONE, ANYTIME

it's only a game  
but it felt  
**SO REAL**

Get advice from a counsellor on our 1-2-1 counsellor chat

CLICK HERE



CLICK HERE

Please let us know if they are any concerns regarding bullying online so that we can support children in school. As parents, it is your responsibility to monitor and check children's usage and devices.



# SCHOOL OPEN DAYS

*We will be ACTIVE  
in mind and body*

CLICK HERE

## Starting primary school

If you have a child born between  
**1 September 2021**  
and **31 August 2022**

You must apply for a school place by

**15 January 2026**

For full details, key dates and how to apply online, visit  
[www.hillingdon.gov.uk/schooladmission](http://www.hillingdon.gov.uk/schooladmission)  
or email [admissions@hillington.gov.uk](mailto:admissions@hillington.gov.uk)



[www.hillingdon.gov.uk/schooladmission](http://www.hillingdon.gov.uk/schooladmission)

Last one!



## Belmore Primary School Open Days

Looking for a school place for September 2026? Come and see our friendly, welcoming school where children love learning and hear from our head teacher why we might be the school for you.

No booking required  
9am - Thursday 23/10  
5pm - Thursday 23/10  
9am - Monday 17/10  
5pm - Thursday 27/10  
Or contact us to arrange an alternative time



[www.belmore.school](http://www.belmore.school)  
[enquiries@belmore.school](mailto:enquiries@belmore.school)  
01895 462 364

Don't forget we also have our weekly tours every Friday at 9.45. Just come to the front office if you want to come and see the school in action. Open to existing and new parents.

# READING MATTERS

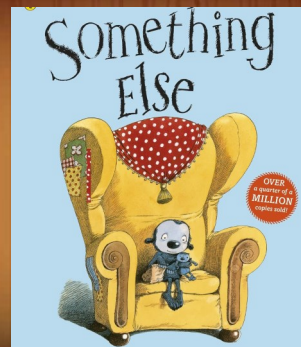
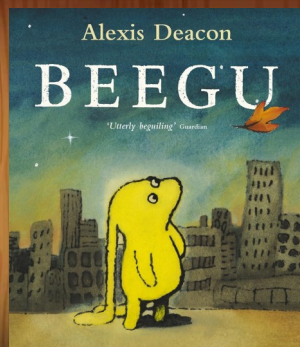
*Books build a stairway to your imagination*

*We are RESILIENT and  
learn from our mistakes*

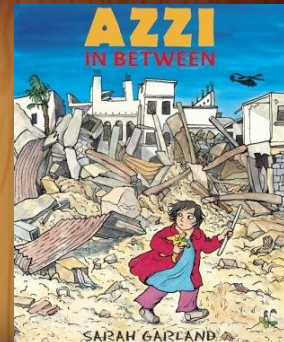
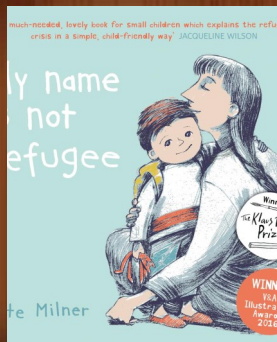
November marks Remembrance Day, a time to reflect on courage, sacrifice, and the impact of conflict. This month's recommended reads explore stories of conflict, peace, refugees and migrants through the eyes of children and families. These books help young readers understand history, empathy, and resilience, while encouraging thoughtful conversations about bravery and hope. You could share these stories at home, having conversation about the importance of remembering and learning

## November 2025 Recommended Reads

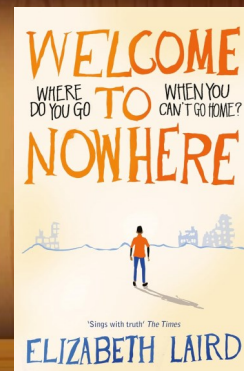
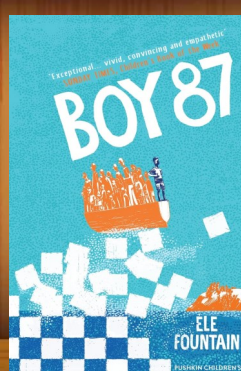
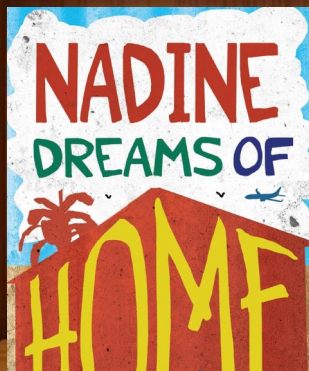
EYFS



KS1



KS2





# SUPPORT OUR SCHOOL

We are *KIND, RESPECTFUL*  
and *WORK TOGETHER*



Please support us by putting your old unwanted clothes in the green bin just inside the front gates, For every full bin you donate we receive money towards future green projects in school



See your favourite brands donate to us whenever you spend with them

Find out more

Uber Eats

ebay

M&S

JOHN LEWIS

Argos

8,000+ online brands

Sign up with easyfundraising page at [here](#), or scan or click on the QR code. Then you can donate to the school every time you shop online.

easyfundraising turns  
your online shopping  
into everyday magic



easyfundraising

You shop, brands donate to us



Click here to purchase something from here for our school. Please make sure you include your name so we can thank you!

amazon

Do you own a business or know someone who does. Would you like a weekly advert on our newsletter plus mentions on our Facebook and Social Media pages? Just buy something from our Wish list below, put your business name on the order and email the office details of your business and we'll put it on this page every week until Christmas!



# SOCIAL MEDIA

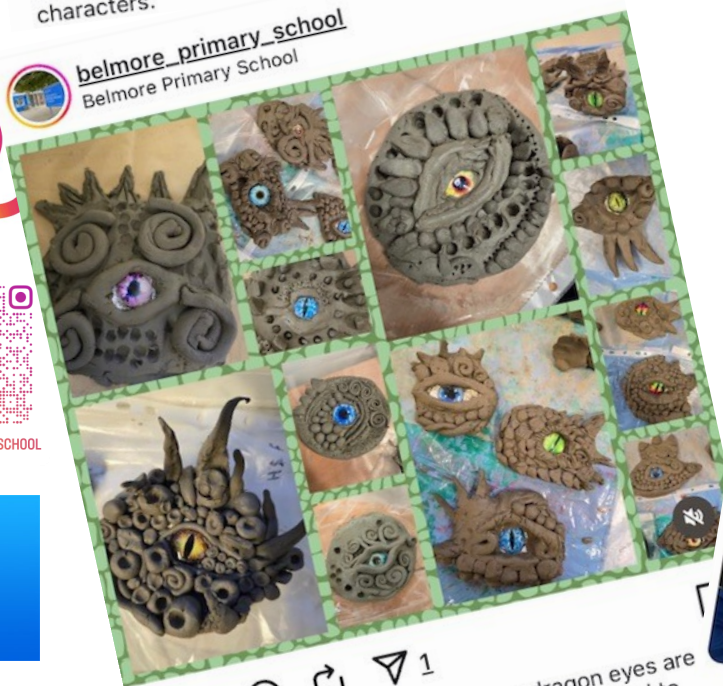
We ASPIRE to be the best we can be



belmore\_primary\_school Nursery have had such a wonderful time exploring their forest area. They read Leaf Man the collected leaves to make their own characters.



belmore\_primary\_school Year 5 and the SEND Hub had the most incredible time experiencing outer space 'he @wonderdomeplanetarium



belmore\_primary\_school Year 5's dragon eyes are looking more and more real! They worked hard to transfer all the detail from their designs to their models.



belmore\_primary\_school Year 5 showing great collaborative skills to match equivalent fractions

