

WEEKLY

# NEWSLETTER

Friday 15th May 2026



KIND

RESILIENT

READY

ACTIVE

ASPIRE

## Message from Miss Taunt

Dear Families,

Apologies for the late newsletter this week. My family has been struck down by a bug, and it caught up with me in the end too!

Firstly, congratulations to Year 6 on a very successful SATs week. We are proud of how hard you worked, and of your maturity and optimism throughout the week. We hope you enjoyed your treats of bowling and a games console afternoon! We also hope that you can enjoy all the great experiences we have lined up for you in your final weeks at Belmore.

A quick note on the new uniform - the new branded uniform will be available to buy at the School Open Evening on Tuesday 7th July. There is no increase in price apart from the fleeces, which will have a £1 increase. There is no obligation to buy branded uniform; unbranded cardigans and sweatshirts in Belmore blue are equally acceptable and can be purchased from places such as Asda and Tesco.

We have some old, logoed uniform available to buy at half price, as this will not be phased out immediately. You can wear it for as long as you still have it.

The rest of the school uniform remains the same: a white shirt or polo shirt (we are also introducing navy polo shirts in Nursery and Reception), grey or black school trousers, and school shoes or trainers. They do not need to be black; however, no Crocs, sandals or UGG-style boots, please, as they are not safe for running and playing in the playground.

We are proud of our new bright, colourful logo, and I hope you are enjoying seeing it around the school too.

Have a lovely weekend

Rose Taunt,  
Head Teacher



### Dates for next Week

#### Monday 18th May

RCW and 6M non uniform days for 100% attendance last week!

#### Tuesday

9am Parent Coffee morning—share ideas for half term

#### Wednesday

12-3pm Quad Athletics—Hillingdon Leisure Centre for selected pupils

#### Thursday

8.50-10.20 Play & Stay for 0-4 year olds—

9.00 3H Class Assembly — 3H parents are invited to attend

Special Dolce Lunch Menu — Summer Time Fiesta

3.30pm Y6 PGL Residential Parent Meeting

#### Friday

9am KS1 Assembly—parents welcome

9.30 & 10.30 am—School Tours—see page 8

2.45pm KS2 Assembly— parents welcome

3.20 - End of half term

[Click here for term dates](#)

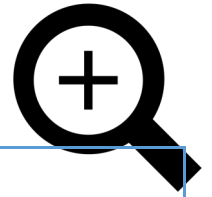
# Dates for your Diary

We want you to be part of our school

We will be ACTIVE  
in mind and body

## Summer Term 2026

New things that have been added this week will be highlighted yellow.



### Key Dates

May	Wednesday 20th May	Quad Athletics Tournament for selected pupils
	Thursday 21st May	9am 3H Class Assembly—parents of 3H welcome 3.30pm Y6 Residential Parent Meeting KS1 Hall
	Mon 25th-Fri 29th May	Half Term break—No school for pupils
June	Week beginning Mon 1st June	Y4 Multiplication checks over the next 2 weeks
	Wednesday 3rd June	9.30 and 5pm—Nursery 2026-2027 Meeting.
	Friday 5th June	Reception trip to Hounslow Urban Farm
	Week Beginning 8th June	KS1 Phonics Assessments
	Thursday 11th June	9am 4CL Class Assembly—parents of 4CL welcome Y2 Trip to Windsor Castle
	Friday 12th June	PTA Summer Party—children only. See letters sent today
	Sun 14th to 16th June	Y6 Residential
	Thursday 18th June	Sports days: AM Y4&6, PM Y3&5 2.30pm RSE Parents Workshop
	Friday 19th June	Sports day: AM Y1&2, PM Reception and SEND Hub
	Monday 22nd June	Y6 Pedestrian Training
	Tuesday 23rd June	EYFS and KS1 Drama Workshop
	Wednesday 24th June	9.30 Piano Fun Club concert—for invited parents only Y5 Relationships & Sex Education Workshop Y4 Beck Theatre Performance
	Thursday 25th June	9am Class 5F Assembly—parents of 5F welcome 9.20 - Nursery Sports Day for all nursery children Y6 Relationships and Sex Education Workshop
	Friday 26th June	9.30 Piano Fun Club concert—for invited parents only
	Monday 29th June	Y3 Kew Gardens Trip
	Tuesday 30th June	Y4 London Zoo Trip
July	Wednesday 1st July	Rocksteady concert for Y2 –Y6 invited parents only
	Monday 6th July	Reception height and weight checks
	Tuesday 7th July	Transition day and Open School 4-6pm. <b>Nursery closed all day. Year 6s to visit their new secondary school all day.</b>
	Wednesday 8th July	Y6 Dress Rehearsal to children
	Thursday 9th July	Year 6 Production—4.30pm
	Wednesday 15th July	9am KS1 End of Term Celebration Assembly. For invited families only 9.45 KS2 End of Term Celebration Assembly. For invited families only
	Thursday 16th July	5.30-7.00 Year 6 Prom
	Thursday 16th July	Last day of Nursery
	Friday 17th July	End of term—1.30pm finish

Created by scott desmond  
from Noun Project

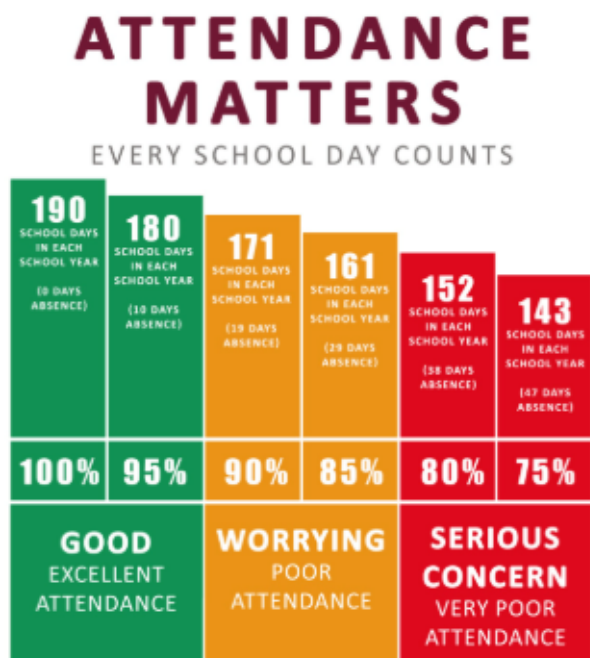
# ATTENDANCE

Attend today, Achieve tomorrow  
Every day counts!

We will be ACTIVE  
in mind and body

If your child is unable to attend school for any reason it is important that you phone the school **before 8am** on the first day of absence and leave a message on the absence line **by calling 01895 462364 and choose option 1.**

**RCW 7 6M will have a non-uniform day on Monday for 100% attendance this week!**



### Attendance WC 11/05/26

Class	Attendance
NAM	84.2
NPM	74.5
ALL DAY	94.4
EINSTEIN & WARHOL	72.0
<b>RCW</b>	<b>100.0</b>
RW	93.3
RR	98.0
1Q	97.9
1O	90.4
2D	97.1
2R	97.0
2K	96.4
3H	97.1
3F	95.2
3A	96.7
4CH	93.3
4CL	96.4
4Q	97.0
5L	94.0
5F	96.1
5E	95.0
6L	95.7
6M	100.0
6R	99.1

### Top Attendance Classes

The classes claiming the Attendance Cup for the best attendance this year are:

Lower school - 2D

Key Stage 2 - 4Q



No classes had no lates this week!

This week's whole school attendance

↑ **93.9%**

Our target is more than 95%

Number of children who had 100% attendance this Week:

↑ **394**

# CELEBRATIONS & AWARDS

We ASPIRE to be  
the best we can be

## This Week's Star Pupils

Class name	Star Pupil
Turtles	
Owls	
RCW	Sadaf
RW	Ikhlaas
RR	Aayat
1O	Ixabel
1Q	Rivan
2D	Maya
2R	David
2K	Theo
3H	Manvi
3F	Maryam
3A	Zoya
4CH	Lewis
4CL	
4Q	Abubakar
5L	Kanwar
5F	Avinash
5E	Asees
6M	Jaiden
6L	Khadija
6R	Lihirthan

## PSD Sports Champions

Ziaire	Shyloe	Jad
Nellie and Amari	Rivan	Antonia
Gunseerat	Kingsley	Zoya
	Kyra	Hadya

## Our Readers of the week are:



Abdul	Zemar
Hanna	Hanna
Leah	Dylan
Ava	Aesha
Aldion	Ebenezer
Amelia	Sienna
Ismael	Brian
Kajus	Maria
Arian	
Hope	



## BELMORE PRIMARY SCHOOL

**Bold learning. Big experiences. Bright futures.**

### Nursery 2026/2027 Information Meeting

What to expect:

- A presentation giving key information about what to expect when starting Nursery
- An overview of the transition process (Stay and Play sessions, Home Visits)
- Insight into a typical day in Nursery and the structure of the Nursery session
- A chance to ask questions and meet our Nursery teacher
- An opportunity to meet other parents whose children will be attending Nursery from September 2026 onwards
- Information regarding changes to session preference options and top up sessions
- Both presentations will include a Nursery guided tour

Please note: this session is mainly aimed at parents/carers. Children are not expected to attend.

**Wednesday 3<sup>rd</sup> June 2026**  
9.30am & 5pm



Book here



CLICK HERE

From September 2026, Belmore nursery will be expanding! This will include:

- more places for 3 year olds with greater flexibility so you can choose which sessions your child attends and top-up with extra paid sessions.
- Limited 2 year old spaces.

To find out more and join the waiting list, please fill in an application form at the front office and come to the meeting.

# AFTER-SCHOOL CLUBS

*We will be ACTIVE  
in mind and body*

All our after-school clubs are now bookable in one place on our new app Pembee. Click on the links to book. If you are one of our Priority Families (eligible for pupil premium) you are entitled to free sessions for Adventurers as well as a free PSD Club. Please contact the school office for your code, spaces are limited and are on a first come first serve basis.



Free Trail session available for every PSD club.

Monthly, half termly and termly payment options.

Click on the links below to book

Club and cost	Year Groups	Day	Booking Link
<b>Breakfast Club</b> Free	Reception to Year 6	Every day, 7.45-8.35. Doors close at 8.15	<a href="#">Breakfast Club   Belmore Primary Academy</a>
<b>Adventurers After School Club</b> £4.50-£11	Reception to Year 6	Every day, 3.20-6.00 Also available 4.30-6	<a href="#">Belmore Adventurers After School Club   Belmore Primary Academy</a>
<b>Monday</b>			
<b>Gymnastics</b> £35 for the term,	Years 1 and 2	Monday, 3.20-4.20	<a href="#">PSD Gymnastics Club - Years 1-2 Summer Term 2026   Belmore Primary Academy</a>
<b>Forest School</b>	Reception	Monday 3.20-4.30	By invite only
<b>Athletics Team</b>		Monday 3.20-4.20	By invite only
<b>Tuesday</b>			
<b>Rounders</b> £35 for the term,	Years 3 to 6	Tuesday, 3.20-4.2	<a href="#">PSD Rounders Club - Years 3-6 Summer Term 2026   Belmore Primary Academy</a>
<b>KS2 Football</b> £35 for the term,	Years 3 to 6	Tuesday, 3.20-4.2	<a href="#">PSD Football Club - Years 3-6 Summer Term 2026   Belmore Primary Academy</a>
<b>Lego Club</b>	Year 6	Tuesday 3.20-4.20	By invite only
<b>Wednesday</b>			
<b>Athletics</b> £35 for the term,	Year 1 to 6	Wednesday, 3.20-4.20	<a href="#">PSD Athletics Club - Years 1-6 Summer Term 2026   Belmore Primary Academy</a>
<b>Netball Team</b>		Wednesday, 3.20-4.20	By invite only
<b>Thursday</b>			
<b>Board Games Club</b> Free	Year 2	Thursday 3.20-4.30	<a href="#">Year 2 Board Games   Belmore Primary Academy</a>
<b>Lego Club</b>	<b>Years 1 and 2</b>	Thursday 3.20-4.20	Fully booked
<b>Football Club</b>	<b>Reception to year 2</b>	Thursday 3.20-4.20	Fully Booked
<b>Friday</b>			
<b>KS1 Dodge Ball</b> £35 for the term,	<b>Years 1 and 2</b>	Friday 3.20-4.20	<a href="#">PSD Dodgeball Club - Years 1-2 Summer Term 2026   Belmore Primary Academy</a>
<b>KS2 Dodge Ball</b> £35 for the term,	Years 3 to 6	Friday 3.20-4.20	<a href="#">PSD Dodgeball Club - Years 3-6 Summer Term 2026   Belmore Primary Academy</a>



BOOK  
ALL 4  
DAYS AND  
SAVE 10%



# FUNWEEKS

## MAY HALF TERM

# ACTIVE CAMP



SCAN TO BOOK

**BELMORE PRIMARY  
ACADEMY**



**TUESDAY 26TH -  
FRIDAY 29TH MAY**



**9AM - 3PM**



**FOR CHILDREN IN  
SCHOOL YEARS 1 - 7**

**Multi Sports  
Arts & Crafts  
Sibling  
Discount  
Prizes  
Games**

**EARLY BIRD  
PRICING:**

**BOOK  
BEFORE  
MIDDAY ON  
20TH MAY  
£18.00**

**BOOK  
AFTER  
MIDDAY ON  
20TH MAY  
£20.00**

**WWW.THEPSDGROUP.ORG.UK/PSD-FUNWEEKS**

FOOTBALL CLUB  
@ BARNHILL

We will be ACTIVE  
in mind and body

CLICK HERE 

EVENING  
DEVELOPMENT  
COURSE

AT

**BARNHILL SCHOOL**  
**HAYES**

★ ★ ★ ★ ★  
**PRO SOCCER COACHING**



**VENUE:** YEADING LANE , UB4 9LE

**WHEN:** EVERY MONDAY (EXL SCHOOL HOLIDAYS)

REC-YEAR 1 : 6pm-7pm

YEAR 2-YEAR 3 : 6pm-7pm

YEAR 4-YEAR 5: 7pm-8pm

YEAR 6-YEAR 7: 7pm-8pm

BOYS AND GIRLS  
OF ALL ABILITIES

AGES: 4-14 YEARS

**MEMBERSHIP PRICES**

**EVERY 4 WEEKS: £36**

**(£9.00 PER SESSION\*)**



MEDALS AND  
TROPHIES UP  
FOR GRABS.



07947 638205

**BOOK  
NOW**



[WWW.PROSOCCERCOACHING.ORG](http://WWW.PROSOCCERCOACHING.ORG)





North West London

## An information leaflet about the new NHS dental clinics for children in Hillingdon.

Seeing the dentist regularly means any small problems can be found and treated early, before they become painful or more serious. Early visits also help children get used to the dentist and feel more confident about their care.

We are here to help with a new service, designed for children/young people who have never seen a dentist or have not seen one in the last 12 months.

### What's on offer?

- ✓ NHS dental services for children under 16 in Hillingdon
- ✓ longer, calmer appointments in a child friendly environment
- ✓ skilled, caring dental teams experienced with nervous or first time patients
- ✓ helpful advice for parents on brushing, diet, and check-ups
- ✓ local clinics near family hubs, schools, and children's centres.

### Where can my child be seen?

High Street Uxbridge (Petrie Tucker & Partners Ltd)	218 High Street, The Chimes Shopping Centre, Uxbridge, UB8 1LB	01895 235858
130 Dental	130 Coldharbour Ln, Hayes UB3 3HB	020 8573 0026
Hayes Dental Clinic	87A Coldharbour Ln, Hayes UB3 3EF	020 8573 5899

### How to access

Speak to a member of staff at your local hub for help booking an appointment, or contact your chosen dental practice directly to make an appointment for your child. **Please bring this leaflet with you to your child's appointment** as it helps the team know you're part of the hub's dental pathway.

# SEND ADVICE, INFO & SUPPORT

We will be ACTIVE  
in mind and body



## WAITING WELL WORKSHOP

**Waiting for an Autism Assessment?  
Join Our Waiting Well Programme**

**Supporting families with children aged 5+ who are waiting for an autism assessment. Get practical tips, emotional support, and helpful resources in a friendly, supportive space.**

**Weekly topics include:**

**What is autism?**

**Communication and language**

**Social interaction and understanding**

**Anxiety, meltdowns, and repetitive behaviours**

**Sensory processing**

**Diagnosis process, EHCPs, and SEN provision**

**You're not alone – we're here to support you while you wait.**

Date and time	LOCATION	QR code to registrar
Time: 12pm-1pm Tuesday 12th, 19th May 2nd, 9th, 16th 23rd June	Hillingdon Autistic Care & Support HACS Resource Centre Dudley Place, Off Pinkwell Lane Hayes UB3 1PB	

### Contact Information

0208 606 6780    0790 378 3872    [natalie@hacs.org.uk](mailto:natalie@hacs.org.uk)

## SUPPORTING YOUR CHILD'S SCHOOL ATTENDANCE SUPPORT GROUPS

### You shared. We heard.

- Thank you to all the parents/carers who joined our focus groups in March.
- In response, Hillingdon Educational Psychology Service are now offering **support groups** to provide the **safe, reflective spaces** and **learning opportunities** you told us you need.
- All parents/carers of children displaying EBSNA are welcome - even if you didn't attend the focus groups.
- Spaces are limited, so we encourage you to sign up to your preferred option as soon as possible!

Scan the QR code to register your interest!



### We are trialling two different formats

#### ONGOING Support Group

- Commitment to attend 6 regularly scheduled sessions with the same group of parents
- A consistent space to reflect, share and grow together
- Ideal if you want to develop connections and share ideas over time as experiences evolve

#### FLEXIBLE Drop-In Sessions

- 6 regularly scheduled drop-in sessions - no expectation to attend every one
- Group members may vary each session
- Ideal if you need flexibility or want to access support as and when it's needed

**Both groups will cover the same topics/content. Parents can only attend one type of group.**

For further information, please contact [educationalpsychologyservice@hillingsdon.gov.uk](mailto:educationalpsychologyservice@hillingsdon.gov.uk)



# SCHOOL TOURS

*We will be ACTIVE  
in mind and body*



## **BELMORE PRIMARY SCHOOL**

**Bold learning. Big experiences. Bright futures.**

**School Tours  
Every Friday  
9.30 or 10.30am**

We would love to show you round our school and give you a behind the scenes look of what amazing learning looks like at Belmore

[www.belmore.school](http://www.belmore.school)  
[enquiries@belmore.school](mailto:enquiries@belmore.school)  
01895 462 364

Book here or by phoning the office



# KEEPING SAFE ONLINE

We are **RESILIENT** and learn from our mistakes

We are getting more and more children who are using online games and social media inappropriately. Make sure you have the right information to keep your child



Advice for parents and carers

## Phones

[CLICK HERE](#)



## Is my child ready for a phone?

Before giving your child a phone, consider their emotional and social maturity.

It's helpful to ask yourself whether they can follow rules and boundaries – and if they understand what's safe and unsafe online.

Consider, too, whether they are able to talk to you if something worries them, and if they show responsibility in other areas of their life.

Together with Vodafone, we developed a [decision tool](#) with 8 questions to help you decide when is the right time for your family. We also have [advice on access to technology for different ages](#) to help guide your decision.



[CLICK HERE](#)

## Six top tips to help you manage the risks

[CLICK HERE](#)



# childline

[CLICK HERE](#)



## Taking control of your online safety

Our tips will help you stay one step ahead.

## Smartphones vs. basic phones

A parent's guide to basic phones

Many families are choosing simpler mobile phones, often called basic phones, to give children independence without all the risks of a smartphone.

internet matters.org



[CLICK HERE](#)

Please let us know if there are any concerns regarding bullying online so that we can support children in school. As parents, it is your responsibility to monitor and check children's usage and devices.

# READING MATTERS

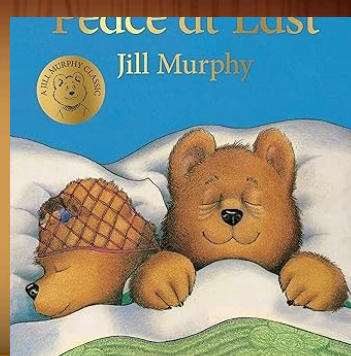
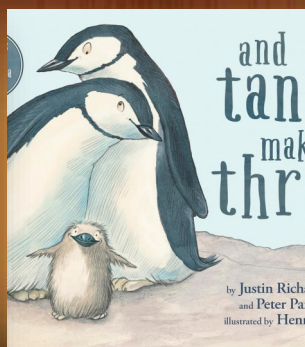
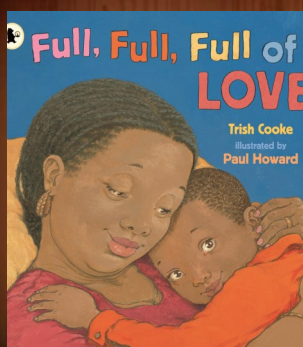
Books build a stairway to your imagination

We are *RESILIENT* and  
learn from our mistakes

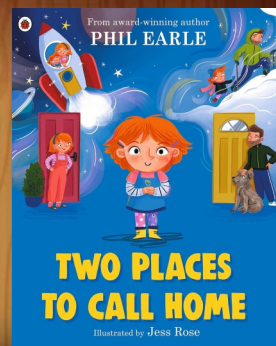
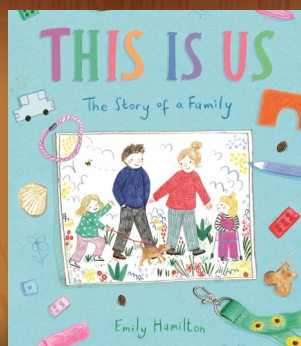
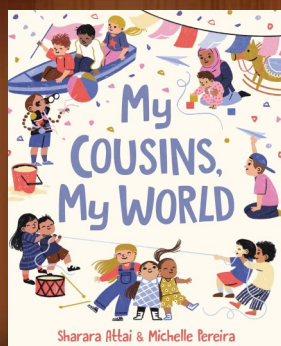
Our book choices this month focus on family, in recognition of National Children's Day and National Families Day. The selection includes a range of stories that explore relationships, support, and everyday family life. We hope these books encourage pupils to read together and reflect on what family means to them.

## May 2026 Recommended Reads

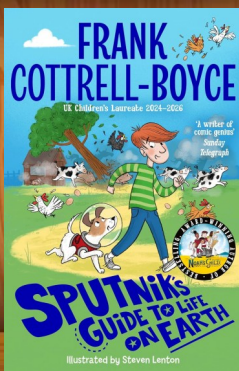
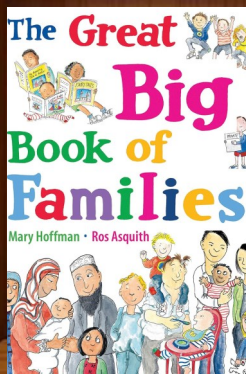
EYFS



KS1



KS2



New Page!

## Donations of the following items needed!

Please drop items at the front office  
or contact Mrs Rae—thank you!



**Planks of wood (any size)**

**Skateboards**

**Large and small cable reels**

**Guttering**

**Crates**

[Link to Belmore's Play Policy.](#)

# SUPPORT OUR SCHOOL

We are *KIND, RESPECTFUL*  
and *WORK TOGETHER*



Please support us by putting your old unwanted clothes in the green bin just inside the front gates, For every full bin you donate we receive money towards future green projects in school

CLICK HERE



See your favourite brands donate to us whenever you spend with them

Find out more

Uber Eats

ebay

M&S

JOHN LEWIS

Argos

8,000+ online brands

Click here to purchase something from here for our school. Please make sure you include your name so we can thank you!

amazon



**Do you work in a trade?**

Can you help us with some improvements to our school site?

We need support with:

**Painting, fencing, landscaping, building**

Please email Mrs Rae if you might be able to help us.

Enquiries@belmore.school

Do you own a business or know someone who does. Would you like a weekly advert on our newsletter plus mentions on our Facebook and Social Media pages? Just buy something from our Wish list below, put your business name on the order and email the office details of your business and we'll put it on this page every week until Christmas!

# SOCIAL MEDIA HIGHLIGHTS

*We ASPIRE to be  
the best we can be*

